

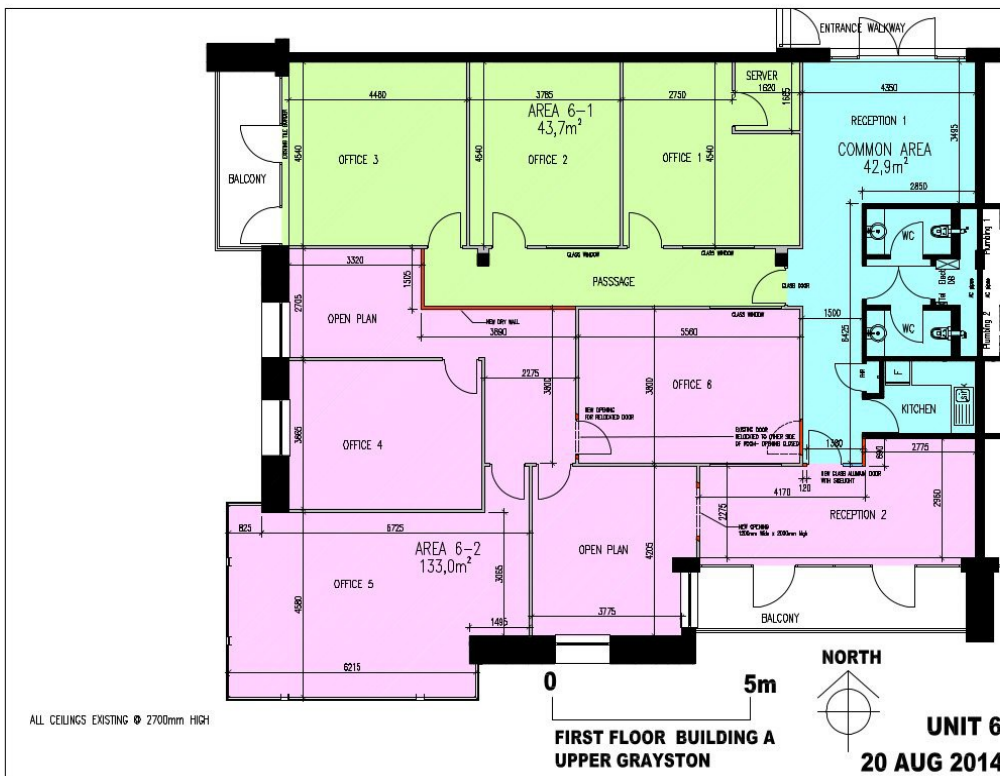
UPPER GRAYSTON OFFICE PARK

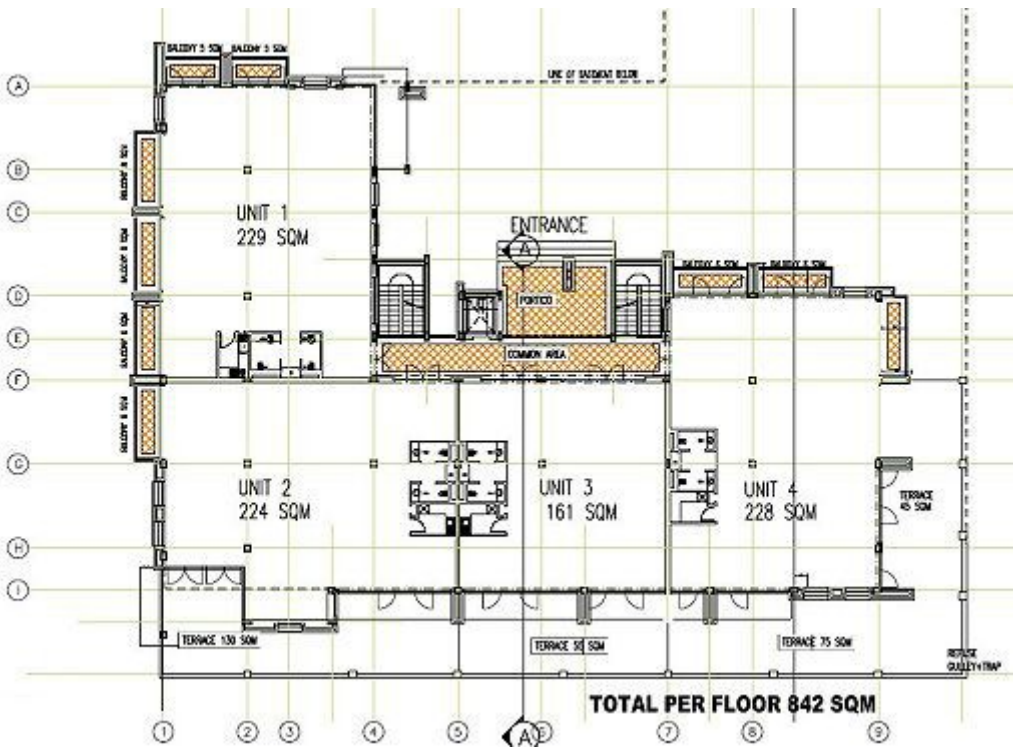
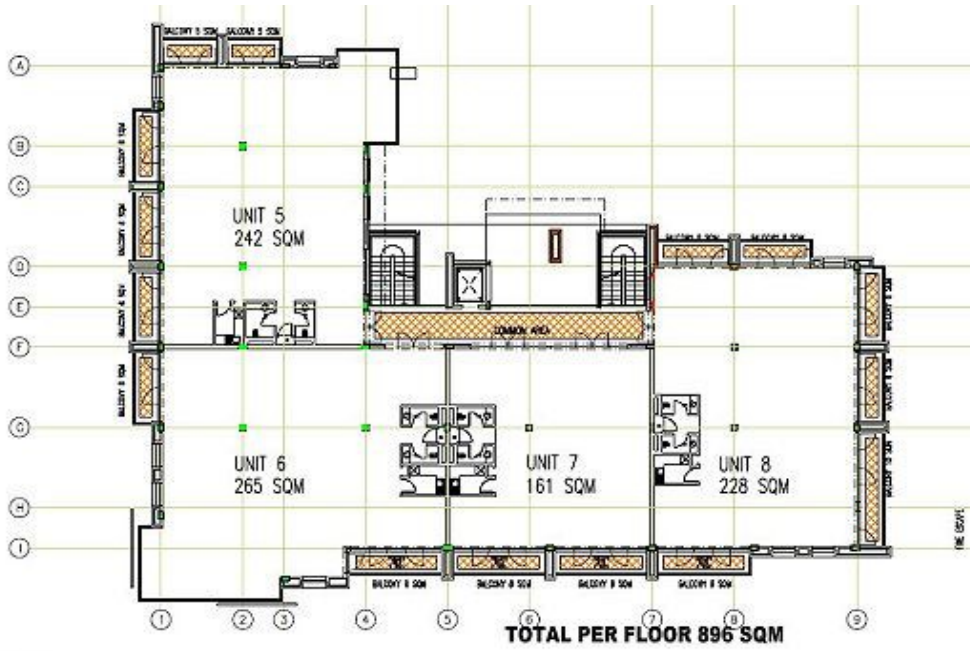
<https://www.brydensgroup.com/upper-grayston-block/>

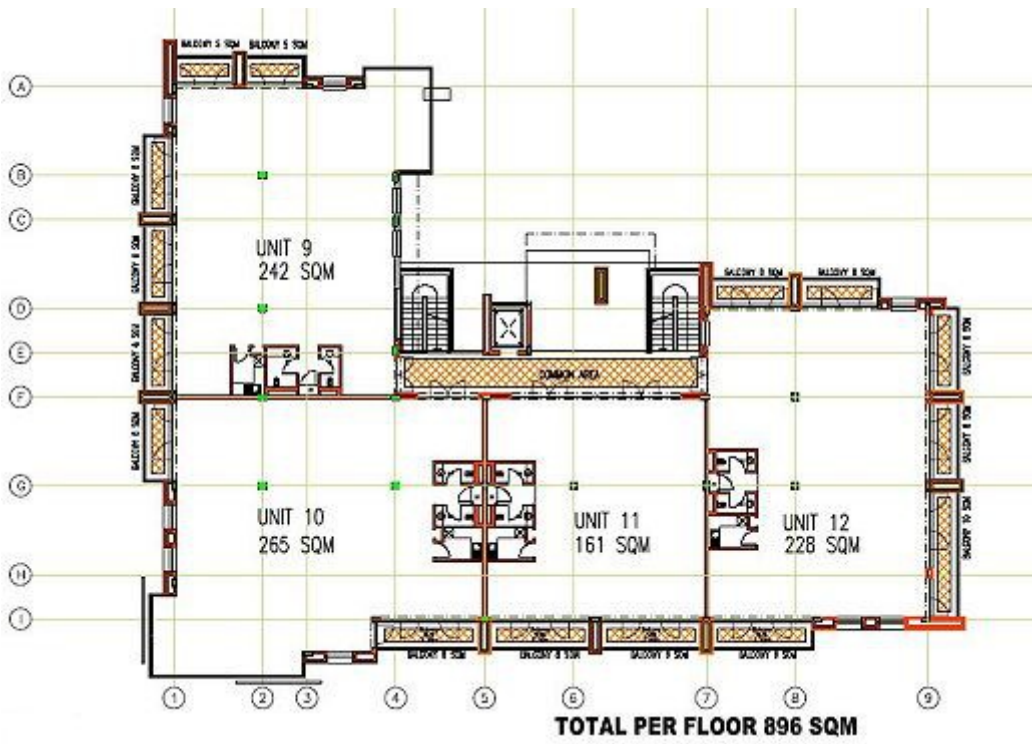
Upper Grayston Office Park is situated within the heart of the greater Sandton office node, adjacent to the Katherine Street off ramp onto the M1 highway. The Upper Grayston Office Park consists of several even measuring 22500m² comprising virtually the entire block circumscribed by Anne Crescent. In addition Portion 12, currently utilized as a hostel despite being owned by third parties, will fall under the general banner of the Upper Grayston Office Park and share common fencing, security systems and a common architecture.

FLOOR PLANS

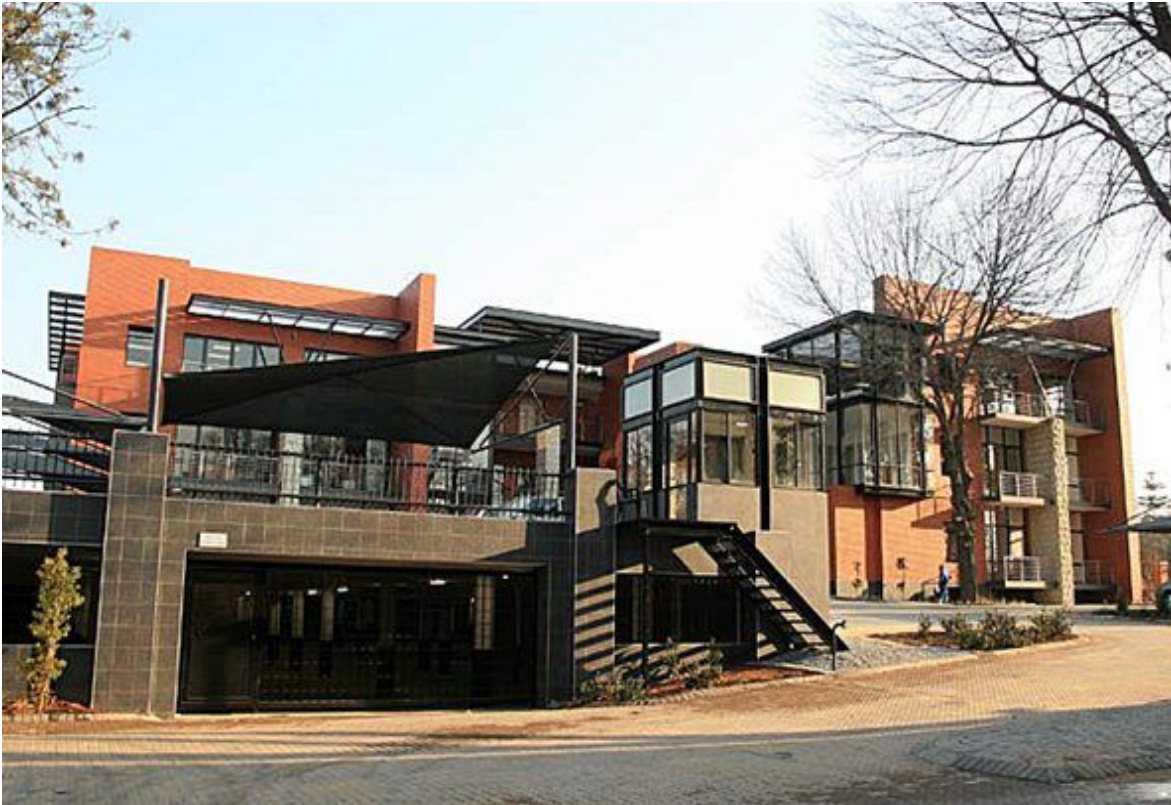
Block A - first floor - shared office







BUILDING PICTURES





LOCATION and SITE PLANS

<https://goo.gl/maps/LAsMVR2nDmyjyARZA>





Aerial Photo Copyright: 2003(Joburg), 2000(AOC/Emoyeni)

Scale 1:4718